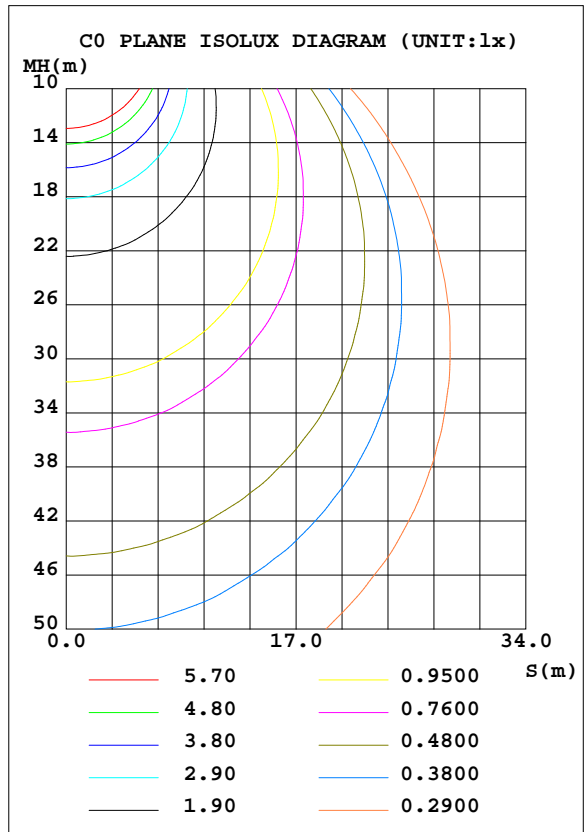
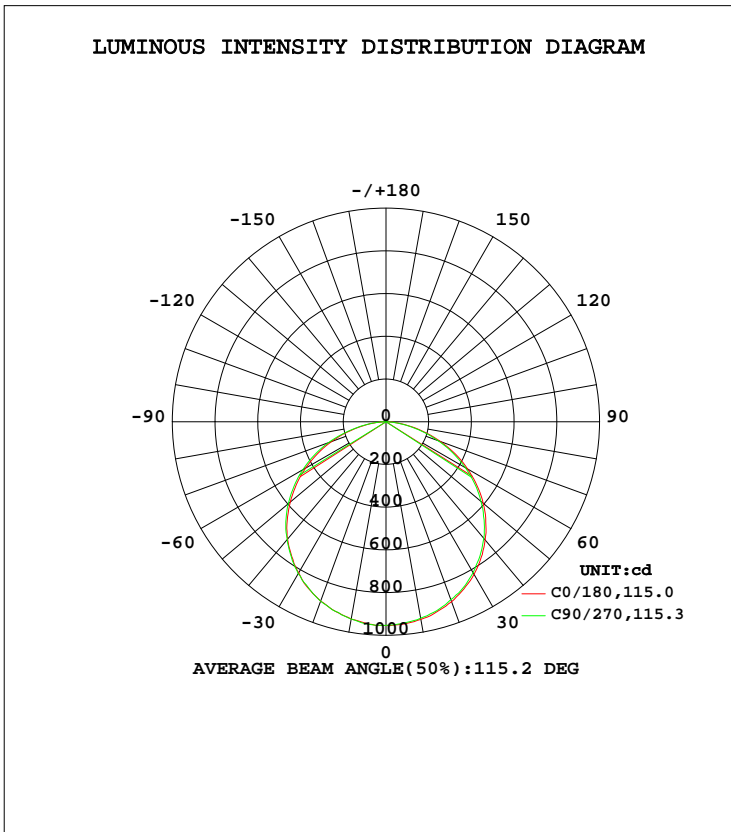


LUMINAIRE PHOTOMETRIC TEST REPORT

Test:U:24.08V I:1.233A P:29.70W PF:1.000 Freq:0Hz Lamp Flux:2805.9lx1 lm		
NAME: Strip light	TYPE:LED	WEIGHT:N/A
SPEC.:N/A	DIM.:	SERIAL No.:N/A
MFR.: TOVO LIGHTING	SUR.:	Shielding Angle:N/A

DATA OF LAMP		PHOTOMETRIC DATA Eff: 94.49 lm/W			
MODEL	4189_2700	I <sub>max</sub> (cd)	955.2	S/MH(C0/180)	1.28
NOMINAL POWER(W)		LOR(%)	100.0	S/MH(C90/270)	1.28
RATED VOLTAGE(V)		TOTAL FLUX(lm)	2805.9	η UP, DN(C0-180)	0.1,49.4
NOMINAL FLUX(lm)	2805.91	CIE CLASS	DIRECT	η UP, DN(C180-360)	0.1,50.5
LAMPS INSIDE	1	η up(%)	0.2	CIBSE SHR NOM	1.25
TEST VOLTAGE(V)	24	η down(%)	99.8	CIBSE SHR MAX	1.35



C Range: 0 - 360DEG  
 C Interval: 22.5DEG  
 Test Speed: HIGH  
 Temperature:24.5DEG  
 Operators:William  
 Test Date:2017-11-15

γ Range: 0 - 180DEG  
 γ Interval: 1.0DEG  
 Test System:EVERFINE GO-R5000\_V2 SYSTEM V2.0.352  
 Humidity:65.7%  
 Test Distance:26.000m [K=1.4470]  
 Remarks:

ZONAL FLUX DIAGRAM

ZONAL FLUX DIAGRAM:

γ	C0	C45	C90	C135	C180	C225	C270	C315	γ	Φ zone	Φ total	%lum, lamp
10	939.4	943.3	934.0	934.7	938.5	940.0	938.2	939.7	0- 10	90.27	90.27	3.22,3.22
20	897.2	897.0	886.8	887.8	893.7	892.7	894.1	895.5	10- 20	259.5	349.8	12.5,12.5
30	824.4	822.5	815.8	812.3	816.9	820.4	821.8	822.5	20- 30	396.2	746.0	26.6,26.6
40	721.7	722.0	712.0	711.7	717.2	723.6	720.0	725.6	30- 40	482.6	1229	43.8,43.8
50	594.4	592.9	580.7	582.3	585.7	596.7	597.4	599.2	40- 50	506.8	1735	61.8,61.8
60	440.9	440.1	428.3	433.1	434.3	447.7	449.1	450.8	50- 60	462.7	2198	78.3,78.3
70	271.2	266.5	259.7	264.1	270.3	281.4	285.8	285.2	60- 70	353.8	2552	90.9,90.9
80	104.6	98.93	94.32	99.19	108.5	115.7	116.4	116.4	70- 80	198.3	2750	98,98
90	6.121	4.701	0.5924	8.304	8.637	7.665	4.431	9.188	80- 90	50.88	2801	99.8,99.8
100	0	0	0.1586	0.7167	0.1594	0.3219	0.7930	0.4748	90-100	0.9268	2802	99.9,99.9
110	0	0	0.3172	0.2374	0.3188	0.4829	2.142	0.4748	100-110	0.3539	2802	99.9,99.9
120	0	0	0.6334	0.2374	0.4782	0.6439	3.013	0.5539	110-120	0.5077	2803	99.9,99.9
130	0.0797	0	1.269	0.2374	0.5579	0.7244	3.730	0.6338	120-130	0.5786	2803	99.9,99.9
140	0.0797	0.2431	1.269	0.2374	0.7172	0.9642	3.806	0.7934	130-140	0.6145	2804	99.9,99.9
150	0.3999	1.046	1.348	0.7876	1.035	1.128	3.721	1.187	140-150	0.6422	2805	100,100
160	0.5579	1.288	1.348	1.187	1.195	1.368	2.537	1.583	150-160	0.5862	2805	100,100
170	1.116	1.368	4.594	1.266	1.355	1.449	2.537	1.583	160-170	0.4428	2806	100,100
180	1.596	1.368	5.154	1.266	1.514	1.449	2.458	1.583	170-180	0.1862	2806	100,100
DEG	LUMINOUS INTENSITY:cd									UNIT:lm		

Conical surface Flux(90deg): 1483.2 lm

%lum = 52.9%  
%lamp = 52.9%

Conical surface Flux(120deg): 2198 lm

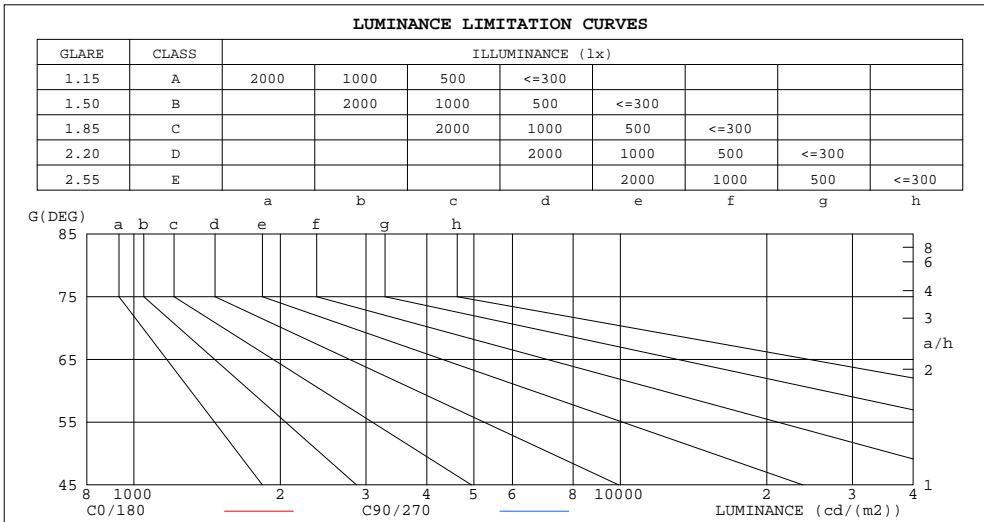
%lum = 78.3%  
%lamp = 78.3%

C Range: 0 - 360DEG  
C Interval: 22.5DEG  
Test Speed: HIGH  
Temperature:24.5DEG  
Operators:William  
Test Date:2017-11-15

γ Range: 0 - 180DEG  
γ Interval: 1.0DEG  
Test System:EVERFINE GO-R5000\_V2 SYSTEM V2.0.352  
Humidity:65.7%  
Test Distance:26.000m [K=1.4470]  
Remarks:

LUMINANCE LIMITATION CURVES

Test:U:24.08V I:1.233A P:29.70W PF:1.000 Freq:0Hz Lamp Flux:2805.9lx1 lm		
NAME: Strip light	TYPE:LED	WEIGHT:N/A
SPEC.:N/A	DIM.:	SERIAL No.:N/A
MFR.: TOVO LIGHTING	SUR.:	Shielding Angle:N/A



LUMINANCE cd/(m2)		
G(DEG)	C0/180	C90/270
85	460438	386572
80	602297	543190
75	717644	675102
70	792799	759295
65	849579	816898
60	881738	856539
55	906962	885804
50	924743	903415
45	934418	919084

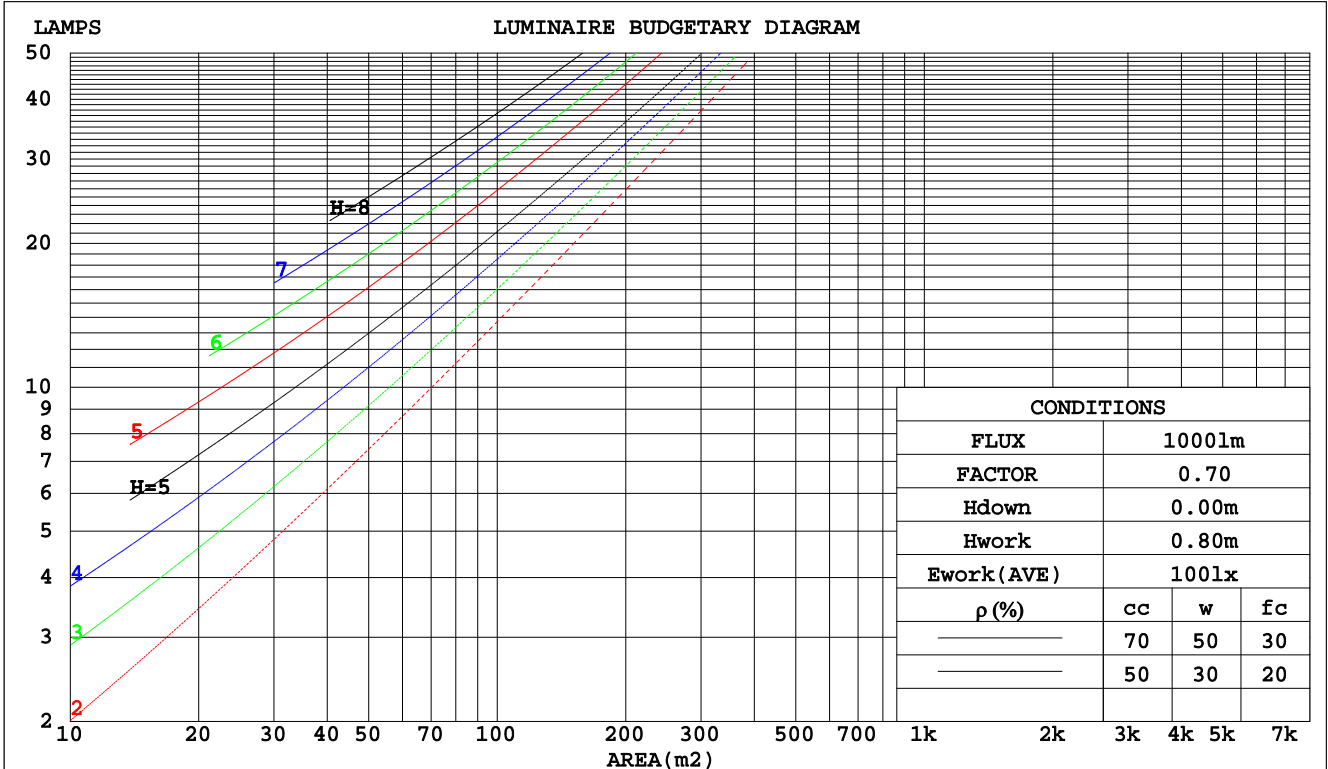
C Range: 0 - 360DEG  
 C Interval: 22.5DEG  
 Test Speed: HIGH  
 Temperature:24.5DEG  
 Operators:William  
 Test Date:2017-11-15

γ Range: 0 - 180DEG  
 γ Interval: 1.0DEG  
 Test System:EVERFINE GO-R5000\_V2 SYSTEM V2.0.352  
 Humidity:65.7%  
 Test Distance:26.000m [K=1.4470]  
 Remarks:

CU AND LUMINAIRE BUDGETARY ESTIMATE DIAGRAM

Test:U:24.08V I:1.233A P:29.70W PF:1.000 Freq:0Hz Lamp Flux:2805.91x1 lm		
NAME: Strip light	TYPE:LED	WEIGHT:N/A
SPEC.:N/A	DIM.:	SERIAL No.:N/A
MFR.: TOVO LIGHTING	SUR.:	Shielding Angle:N/A

pcc	80%			70%			50%			30%			10%			0
pw	50%	30%	10%	50%	30%	10%	50%	30%	10%	50%	30%	10%	50%	30%	10%	0
pfc	20%			20%			20%			20%			20%			0
RCR	RCR:Room Cavity Ratio						Coefficients of Utilization(CU)									
0.0	1.19	1.19	1.19	1.16	1.16	1.16	1.11	1.11	1.11	1.06	1.06	1.06	1.02	1.02	1.02	.00
1.0	1.04	.99	.96	1.01	.98	.94	.97	.94	.91	.93	.91	.88	.90	.87	.85	.83
2.0	.90	.83	.78	.88	.82	.77	.85	.79	.75	.81	.77	.73	.78	.75	.71	.69
3.0	.79	.71	.64	.77	.70	.64	.74	.68	.62	.72	.66	.61	.69	.64	.60	.58
4.0	.70	.61	.54	.69	.60	.54	.66	.59	.53	.64	.57	.52	.61	.56	.52	.49
5.0	.62	.53	.47	.61	.53	.46	.59	.52	.46	.57	.50	.45	.55	.49	.45	.43
6.0	.56	.47	.41	.55	.47	.40	.53	.46	.40	.52	.45	.40	.50	.44	.39	.37
7.0	.51	.42	.36	.50	.42	.36	.48	.41	.35	.47	.40	.35	.46	.39	.35	.33
8.0	.46	.38	.32	.46	.37	.32	.44	.37	.31	.43	.36	.31	.42	.36	.31	.29
9.0	.42	.34	.29	.42	.34	.28	.41	.33	.28	.40	.33	.28	.39	.32	.28	.26
10.0	.39	.31	.26	.39	.31	.26	.38	.31	.26	.37	.30	.26	.36	.30	.25	.24



C Range: 0 - 360DEG  
 C Interval: 22.5DEG  
 Test Speed: HIGH  
 Temperature:24.5DEG  
 Operators:William  
 Test Date:2017-11-15

γ Range: 0 - 180DEG  
 γ Interval: 1.0DEG  
 Test System:EVERFINE GO-R5000\_V2 SYSTEM V2.0.352  
 Humidity:65.7%  
 Test Distance:26.000m [K=1.4470]  
 Remarks:

WEC AND CCEC

Test:U:24.08V I:1.233A P:29.70W PF:1.000 Freq:0Hz Lamp Flux:2805.9lx1 lm		
NAME: Strip light	TYPE:LED	WEIGHT:N/A
SPEC.:N/A	DIM.:	SERIAL No.:N/A
MFR.: TOVO LIGHTING	SUR.:	Shielding Angle:N/A

ρcc	80%			70%			50%			30%			10%			0
ρw	50%	30%	10%	50%	30%	10%	50%	30%	10%	50%	30%	10%	50%	30%	10%	0
ρfc	20%			20%			20%			20%			20%			0
RCR	RCR:Room Cavity Ratio						Wall Exitance Coefficients(WEC)									
0.0																
1.0	.311	.177	.056	.304	.173	.055	.290	.167	.053	.278	.160	.051	.267	.155	.050	
2.0	.293	.161	.049	.287	.158	.049	.275	.153	.048	.264	.148	.046	.254	.144	.045	
3.0	.271	.144	.043	.266	.142	.043	.255	.138	.042	.246	.135	.041	.237	.131	.041	
4.0	.251	.130	.038	.246	.129	.038	.236	.125	.037	.228	.122	.037	.220	.119	.036	
5.0	.232	.118	.034	.227	.117	.034	.219	.114	.034	.211	.111	.033	.204	.109	.033	
6.0	.215	.108	.031	.211	.106	.031	.203	.104	.030	.197	.102	.030	.190	.100	.030	
7.0	.200	.099	.028	.196	.098	.028	.190	.096	.028	.184	.094	.027	.178	.092	.027	
8.0	.187	.091	.026	.183	.090	.026	.178	.089	.025	.172	.087	.025	.167	.086	.025	
9.0	.175	.085	.024	.172	.084	.024	.167	.082	.023	.162	.081	.023	.157	.080	.023	
10.0	.164	.079	.022	.162	.078	.022	.157	.077	.022	.153	.076	.022	.148	.075	.021	

ρcc	80%			70%			50%			30%			10%			0
ρw	50%	30%	10%	50%	30%	10%	50%	30%	10%	50%	30%	10%	50%	30%	10%	0
ρfc	20%			20%			20%			20%			20%			0
RCR	RCR:Room Cavity Ratio						Ceiling Cavity Exitance Coefficients(CCEC)									
0.0	.192	.192	.192	.164	.164	.164	.112	.112	.112	.064	.064	.064	.021	.021	.021	
1.0	.182	.157	.136	.155	.135	.117	.106	.093	.081	.061	.054	.047	.020	.017	.015	
2.0	.174	.133	.099	.149	.115	.086	.102	.079	.060	.059	.046	.035	.019	.015	.011	
3.0	.166	.116	.075	.142	.100	.065	.098	.069	.046	.056	.040	.027	.018	.013	.009	
4.0	.159	.102	.059	.136	.088	.052	.094	.062	.036	.054	.036	.022	.017	.012	.007	
5.0	.151	.092	.048	.130	.080	.042	.089	.056	.030	.052	.033	.018	.017	.011	.006	
6.0	.144	.084	.040	.124	.072	.035	.085	.051	.025	.050	.030	.015	.016	.010	.005	
7.0	.137	.077	.034	.118	.067	.030	.082	.047	.021	.047	.027	.013	.015	.009	.004	
8.0	.131	.071	.030	.112	.062	.026	.078	.043	.019	.045	.025	.011	.015	.008	.004	
9.0	.125	.066	.026	.107	.057	.023	.074	.040	.016	.043	.024	.010	.014	.008	.003	
10.0	.119	.062	.024	.102	.054	.021	.071	.038	.015	.041	.022	.009	.013	.007	.003	

C Range: 0 - 360DEG  
 C Interval: 22.5DEG  
 Test Speed: HIGH  
 Temperature:24.5DEG  
 Operators:William  
 Test Date:2017-11-15

γ Range: 0 - 180DEG  
 γ Interval: 1.0DEG  
 Test System:EVERFINE GO-R5000\_V2 SYSTEM V2.0.352  
 Humidity:65.7%  
 Test Distance:26.000m [K=1.4470]  
 Remarks:

UGR(Unified Glare Rating) Table

Test:U:24.08V I:1.233A P:29.70W PF:1.000 Freq:0Hz Lamp Flux:2805.9lx1 lm										
NAME: Strip light					TYPE:LED			WEIGHT:N/A		
SPEC.:N/A					DIM.:			SERIAL No.:N/A		
MFR.: TOVO LIGHTING					SUR.:			Shielding Angle:N/A		
ceiling/cavity	0.7	0.7	0.5	0.5	0.3	0.7	0.7	0.5	0.5	0.3
walls	0.5	0.3	0.5	0.3	0.3	0.5	0.3	0.5	0.3	0.3
working plane	0.2	0.2	0.2	0.2	0.2	0.2	0.2	0.2	0.2	0.2
Room dimensions	Viewed crosswise					Viewed endwise				
x = 2H y = 2H	36.6	38.1	36.9	38.3	38.5	36.4	38.0	36.7	38.2	38.4
3H	38.1	39.5	38.4	39.7	40.0	37.9	39.3	38.2	39.6	39.8
4H	38.7	40.0	39.0	40.3	40.5	38.4	39.8	38.8	40.0	40.3
6H	39.0	40.3	39.4	40.6	40.8	38.8	40.0	39.1	40.3	40.6
8H	39.1	40.3	39.5	40.6	40.9	38.8	40.1	39.2	40.3	40.6
12H	39.2	40.3	39.5	40.6	40.9	38.9	40.0	39.2	40.3	40.6
4H 2H	37.2	38.5	37.5	38.8	39.1	37.1	38.4	37.4	38.7	38.9
3H	38.9	40.0	39.2	40.3	40.6	38.7	39.9	39.1	40.2	40.5
4H	39.5	40.6	39.9	40.9	41.3	39.3	40.4	39.7	40.7	41.1
6H	40.0	41.0	40.4	41.3	41.7	39.8	40.7	40.2	41.1	41.5
8H	40.2	41.0	40.6	41.4	41.8	39.9	40.8	40.3	41.1	41.5
12H	40.2	41.0	40.7	41.4	41.8	39.9	40.8	40.4	41.1	41.6
8H 4H	39.8	40.7	40.2	41.0	41.4	39.6	40.5	40.0	40.8	41.2
6H	40.4	41.1	40.8	41.5	41.9	40.1	40.9	40.6	41.3	41.7
8H	40.6	41.2	41.0	41.7	42.1	40.3	41.0	40.8	41.4	41.9
12H	40.7	41.3	41.2	41.7	42.2	40.4	41.0	40.9	41.4	41.9
12H 4H	39.8	40.6	40.2	41.0	41.4	39.6	40.4	40.0	40.8	41.2
6H	40.4	41.1	40.9	41.5	41.9	40.2	40.8	40.6	41.3	41.7
8H	40.6	41.2	41.1	41.6	42.1	40.4	40.9	40.9	41.4	41.9
Variations with the observer position at spacings:										
S = 1.0H	+ 0.2 / - 0.2					+ 0.2 / - 0.2				
1.5H	+ 0.2 / - 0.3					+ 0.2 / - 0.3				
2.0H	+ 0.2 / - 0.3					+ 0.2 / - 0.3				

CIE Pub.117 Corrected 2806 lm Total Lamp Luminous Flux.(8log(F/F0) = 3.6)

C Range: 0 - 360DEG  
 C Interval: 22.5DEG  
 Test Speed: HIGH  
 Temperature:24.5DEG  
 Operators:William  
 Test Date:2017-11-15

γ Range: 0 - 180DEG  
 γ Interval: 1.0DEG  
 Test System:EVERFINE GO-R5000\_V2 SYSTEM V2.0.352  
 Humidity:65.7%  
 Test Distance:26.000m [K=1.4470]  
 Remarks:

UTILIZATION FACTORS TABLE

Test:U:24.08V I:1.233A P:29.70W PF:1.000 Freq:0Hz Lamp Flux:2805.9lx1 lm		
NAME: Strip light	TYPE:LED	WEIGHT:N/A
SPEC.:N/A	DIM.:	SERIAL No.:N/A
MFR.: TOVO LIGHTING	SUR.:	Shielding Angle:N/A

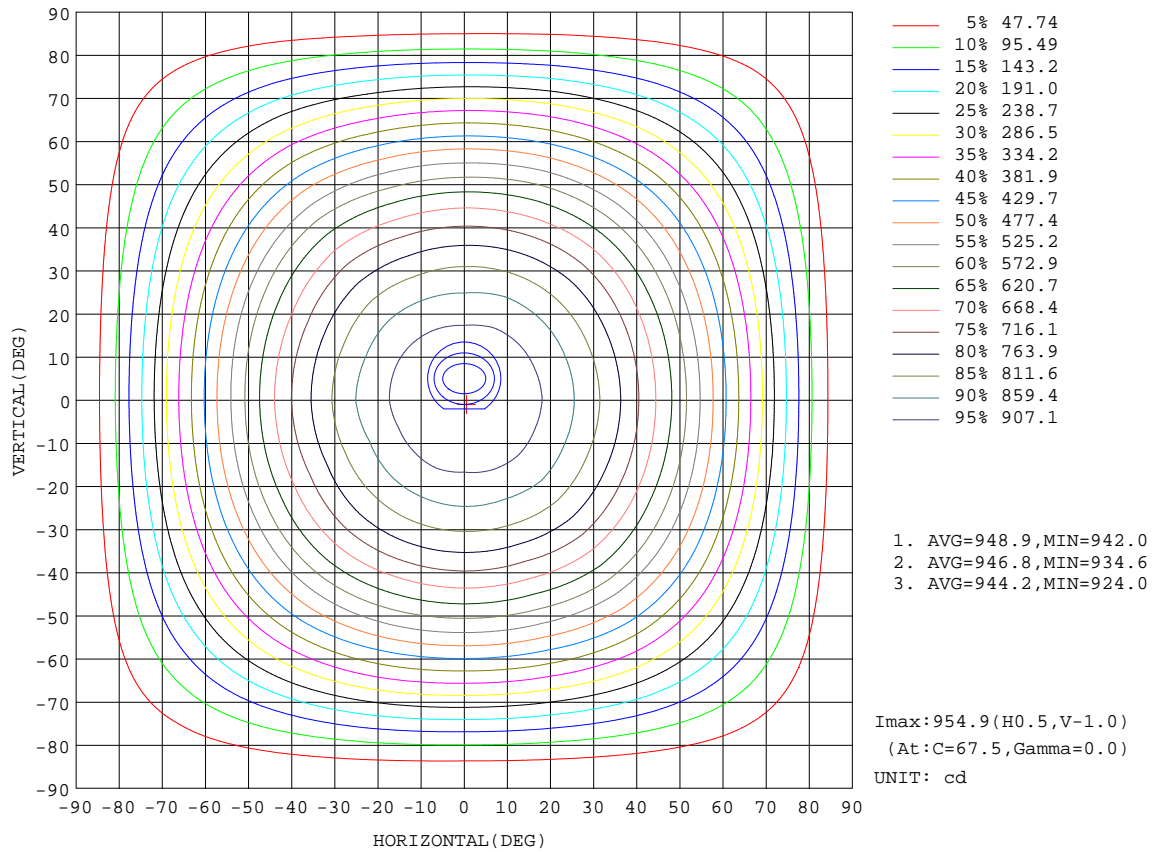
REFLECTANCE										
Ceiling	0.8	0.8	0.8	0.7	0.7	0.7	0.5	0.5	0.5	0
Walls	0.7	0.5	0.3	0.7	0.5	0.3	0.7	0.5	0.3	0
Working plane	0.2	0.2	0.2	0.2	0.2	0.2	0.2	0.2	0.2	0
ROOM INDEX	UTILIZATION FACTORS(PERCENT) $k(RI) \times RCR = 5$									
k = 0.60	57	45	38	56	45	38	55	45	38	31
0.80	67	55	48	66	55	48	64	54	47	40
1.00	76	64	57	74	64	57	72	65	56	49
1.25	83	72	65	81	71	64	79	70	64	56
1.50	88	78	71	86	77	70	83	75	69	62
2.00	95	86	80	93	85	79	89	83	77	69
2.50	99	91	85	97	89	84	93	87	82	74
3.00	102	95	90	100	94	88	96	91	86	78
4.00	106	100	96	104	99	94	99	95	92	83
5.00	109	104	100	106	102	98	102	98	95	86
ROOM INDEX	UF(total)									Direct
According to DIN EN 13032-2 2004			Suspended				SHRNOM = 1.25			

C Range: 0 - 360DEG  
 C Interval: 22.5DEG  
 Test Speed: HIGH  
 Temperature:24.5DEG  
 Operators:William  
 Test Date:2017-11-15

$\gamma$  Range: 0 - 180DEG  
 $\gamma$  Interval: 1.0DEG  
 Test System:EVERFINE GO-R5000\_V2 SYSTEM V2.0.352  
 Humidity:65.7%  
 Test Distance:26.000m [K=1.4470]  
 Remarks:

ISOCANDELA DIAGRAM

Test:U:24.08V I:1.233A P:29.70W PF:1.000 Freq:0Hz Lamp Flux:2805.9lx1 lm		
NAME: Strip light	TYPE:LED	WEIGHT:N/A
SPEC.:N/A	DIM.:	SERIAL No.:N/A
MFR.: TOVO LIGHTING	SUR.:	Shielding Angle:N/A



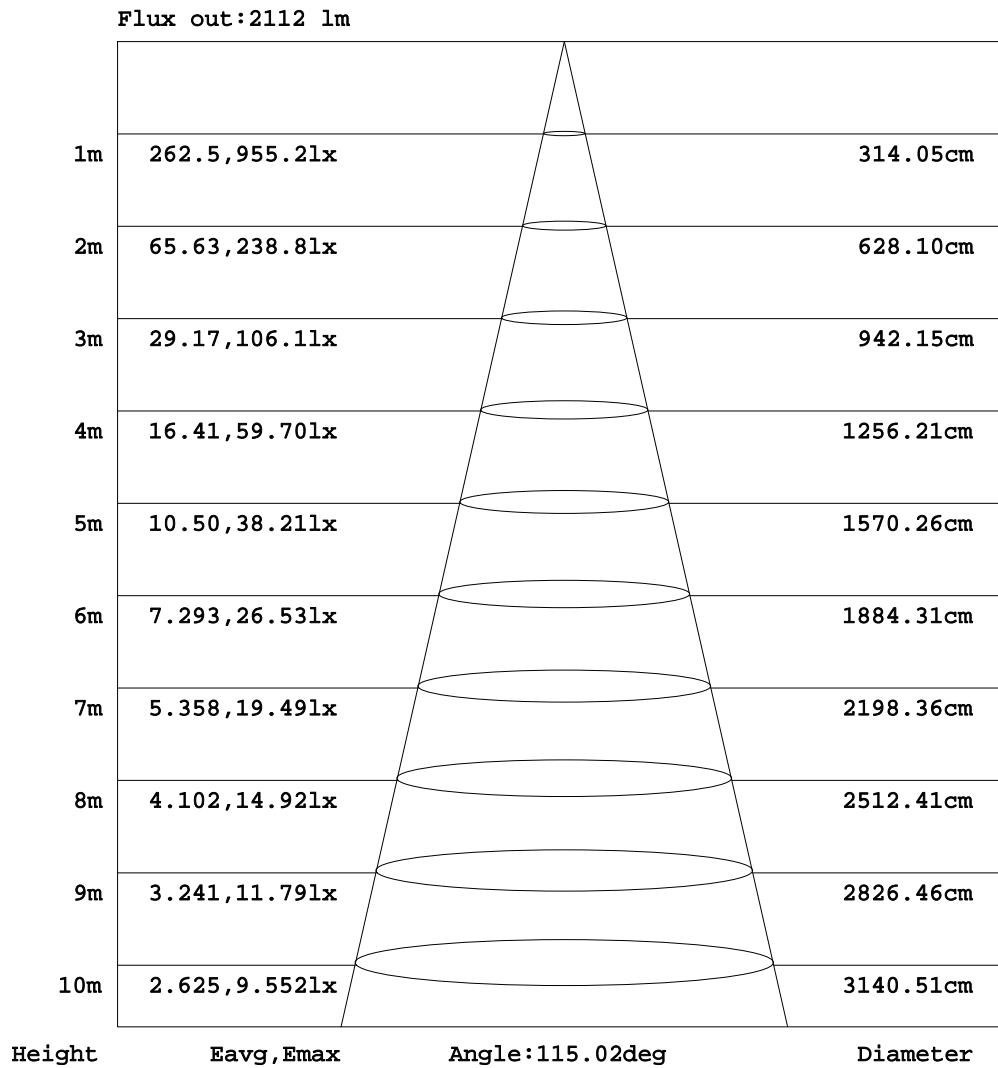
C Range: 0 - 360DEG  
 C Interval: 22.5DEG  
 Test Speed: HIGH  
 Temperature: 24.5DEG  
 Operators: William  
 Test Date: 2017-11-15

γ Range: 0 - 180DEG  
 γ Interval: 1.0DEG  
 Test System: EVERFINE GO-R5000\_V2 SYSTEM V2.0.352  
 Humidity: 65.7%  
 Test Distance: 26.000m [K=1.4470]  
 Remarks:



AAI Figure

Test:U:24.08V I:1.233A P:29.70W PF:1.000 Freq:0Hz Lamp Flux:2805.9lx1 lm		
NAME: Strip light	TYPE:LED	WEIGHT:N/A
SPEC.:N/A	DIM.:	SERIAL No.:N/A
MFR.: TOVO LIGHTING	SUR.:	Shielding Angle:N/A



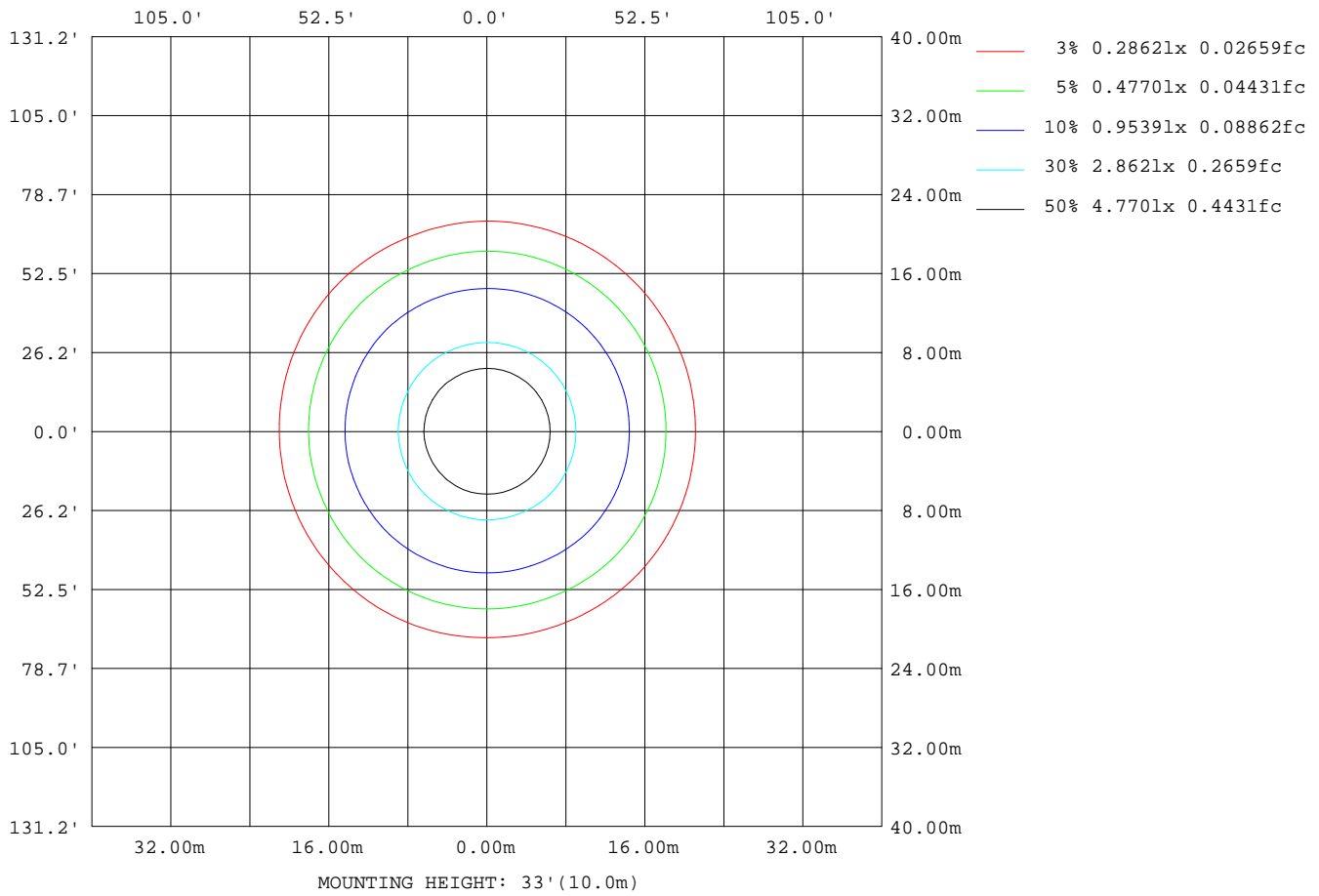
Note:The Curves indicate the illuminated area and the average illumination when the luminaire is at different distance.

C Range: 0 - 360DEG  
 C Interval: 22.5DEG  
 Test Speed: HIGH  
 Temperature:24.5DEG  
 Operators:William  
 Test Date:2017-11-15

γ Range: 0 - 180DEG  
 γ Interval: 1.0DEG  
 Test System:EVERFINE GO-R5000\_V2 SYSTEM V2.0.352  
 Humidity:65.7%  
 Test Distance:26.000m [K=1.4470]  
 Remarks:

ISOLUX DIAGRAM

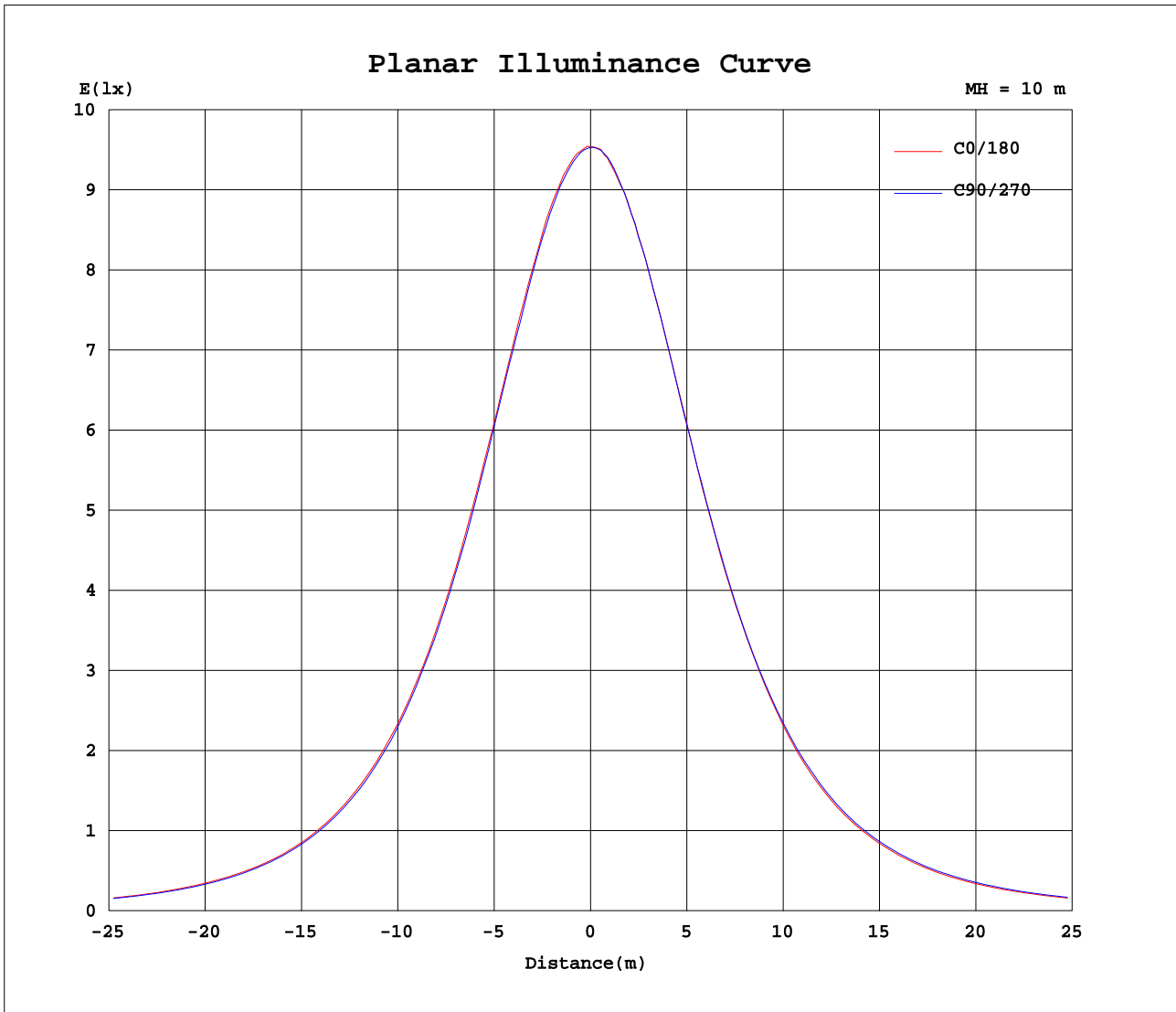
Test:U:24.08V I:1.233A P:29.70W PF:1.000 Freq:0Hz Lamp Flux:2805.9lx1 lm		
NAME: Strip light	TYPE:LED	WEIGHT:N/A
SPEC.:N/A	DIM.:	SERIAL No.:N/A
MFR.: TOVO LIGHTING	SUR.:	Shielding Angle:N/A



C Range: 0 - 360DEG  
 C Interval: 22.5DEG  
 Test Speed: HIGH  
 Temperature:24.5DEG  
 Operators:William  
 Test Date:2017-11-15

γ Range: 0 - 180DEG  
 γ Interval: 1.0DEG  
 Test System:EVERFINE GO-R5000\_V2 SYSTEM V2.0.352  
 Humidity:65.7%  
 Test Distance:26.000m [K=1.4470]  
 Remarks:

Planar Illuminance Curve



C Range: 0 - 360DEG  
C Interval: 22.5DEG  
Test Speed: HIGH  
Temperature: 24.5DEG  
Operators: William  
Test Date: 2017-11-15

$\gamma$  Range: 0 - 180DEG  
 $\gamma$  Interval: 1.0DEG  
Test System: EVERFINE GO-R5000\_V2 SYSTEM V2.0.352  
Humidity: 65.7%  
Test Distance: 26.000m [K=1.4470]  
Remarks:

LUMINOUS DISTRIBUTION INTENSITY DATA

Test:U:24.08V I:1.233A P:29.70W PF:1.000 Freq:0Hz Lamp Flux:2805.91x1 lm		
NAME: Strip light	TYPE:LED	WEIGHT:N/A
SPEC.:N/A	DIM.:	SERIAL No.:N/A
MFR.: TOVO LIGHTING	SUR.:	Shielding Angle:N/A

Table--1

UNIT: cd

C(DEG) γ (DEG)	0	22.5	45	67.5	90	112.5	135	157.5	180	202.5	225	247.5	270	292.5	315	337.5			
0	954	952	954	955	953	953	953	951	954	952	954	955	953	953	953	951			
5	951	951	951	950	947	949	947	946	951	950	949	951	952	950	950	947			
10	939	938	943	942	934	938	935	934	939	939	940	939	938	939	940	938			
15	921	920	923	918	916	919	915	914	918	918	922	920	919	922	921	922			
20	897	895	897	890	887	891	888	885	894	891	893	895	894	897	896	896			
25	864	861	863	857	857	855	855	851	861	858	861	859	858	864	864	863			
30	824	821	822	817	816	814	812	811	817	817	820	818	822	823	823	822			
35	776	774	777	768	767	766	766	762	769	770	774	771	773	776	777	774			
40	722	720	722	712	712	709	712	708	717	716	724	717	720	722	726	722			
45	661	659	660	651	650	649	650	648	654	654	664	658	664	664	666	661			
50	594	593	593	582	581	582	582	581	586	590	597	594	597	600	599	595			
55	520	520	520	509	508	509	512	509	513	518	526	524	525	531	528	522			
60	441	442	440	429	428	430	433	431	434	439	448	447	449	452	451	445			
65	359	357	355	347	345	349	350	350	353	359	366	365	371	372	369	364			
70	271	270	267	260	260	263	264	265	270	276	281	282	286	287	285	279			
75	186	183	180	175	175	178	179	178	187	190	197	196	198	200	198	192			
80	105	103	98.9	95.0	94.3	96.7	99.2	100	108	112	116	117	116	119	116	112			
85	40.1	37.2	35.2	34.1	33.7	36.0	37.5	37.7	42.8	45.0	47.6	46.9	47.5	49.5	48.8	45.7			
90	6.12	5.39	4.70	4.38	0.59	6.22	8.30	9.33	8.64	7.99	7.67	7.05	4.43	8.81	9.19	8.67			
95	0.00	0.08	0.08	0.08	0.16	0.16	0.16	0.08	0.00	0.08	0.16	0.40	0.16	0.00	0.00				
100	0.00	0.56	0.00	0.08	0.16	0.08	0.72	0.24	0.16	0.32	0.32	0.40	0.79	0.16	0.47	0.39			
105	0.00	0.32	0.00	0.08	0.16	0.08	0.24	0.24	0.16	0.32	0.40	0.64	1.35	0.48	0.47	0.32			
110	0.00	0.24	0.00	0.16	0.32	0.08	0.24	0.16	0.32	0.32	0.48	0.96	2.14	0.48	0.47	0.32			
115	0.00	0.24	0.00	0.16	0.55	0.16	0.24	0.16	0.40	0.48	0.56	1.12	2.70	0.71	0.55	0.55			
120	0.00	0.24	0.00	0.16	0.63	0.16	0.24	0.16	0.48	0.56	0.64	1.12	3.01	0.63	0.55	0.47			
125	0.00	0.24	0.00	0.32	1.19	0.32	0.24	0.16	0.48	0.56	0.64	1.12	3.25	0.63	0.55	0.63			
130	0.08	0.24	0.00	0.64	1.27	0.40	0.24	0.16	0.56	0.56	0.72	1.35	3.73	0.79	0.63	0.55			
135	0.08	0.24	0.08	0.64	1.27	0.47	0.24	0.16	0.56	0.64	0.72	1.35	3.81	1.03	0.71	0.63			
140	0.08	0.24	0.24	0.88	1.27	0.63	0.24	0.16	0.72	0.64	0.96	1.35	3.81	1.19	0.79	0.63			
145	0.40	0.32	0.56	1.27	1.35	0.95	0.39	0.24	0.88	0.80	0.97	1.35	3.81	1.43	0.95	0.79			
150	0.40	0.48	1.05	1.35	1.35	1.34	0.79	0.40	1.03	0.96	1.13	1.35	3.72	1.74	1.19	0.95			
155	0.56	0.64	1.28	1.35	1.35	1.27	1.03	0.47	1.20	1.12	1.29	1.35	3.17	1.98	1.35	1.19			
160	0.56	0.72	1.29	1.35	1.35	1.27	1.19	0.55	1.20	1.20	1.37	1.35	2.54	2.38	1.58	1.27			
165	0.88	1.04	1.37	1.51	3.01	1.27	1.19	0.71	1.28	1.36	1.45	1.35	2.54	3.49	1.51	1.27			
170	1.12	1.27	1.37	1.99	4.59	1.27	1.27	1.11	1.35	1.36	1.45	1.35	2.54	5.07	1.58	1.27			
175	1.11	1.44	1.37	2.47	5.00	1.58	1.27	1.27	1.51	1.36	1.45	1.35	2.54	5.15	1.58	1.27			
180	1.60	1.44	1.37	2.47	5.15	1.58	1.27	1.27	1.51	1.36	1.45	1.35	2.46	5.15	1.58	1.27			

C Range: 0 - 360DEG  
 C Interval: 22.5DEG  
 Test Speed: HIGH  
 Temperature:24.5DEG  
 Operators:William  
 Test Date:2017-11-15

γ Range: 0 - 180DEG  
 γ Interval: 1.0DEG  
 Test System:EVERFINE GO-R5000\_V2 SYSTEM V2.0.352  
 Humidity:65.7%  
 Test Distance:26.000m [K=1.4470]  
 Remarks: