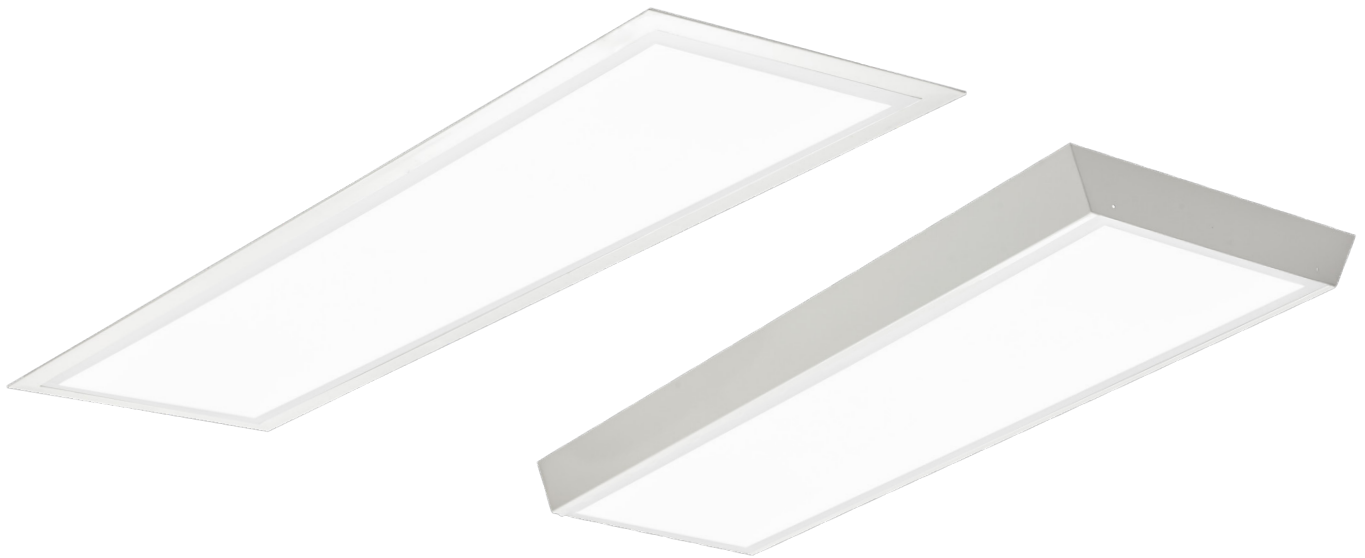


# TOVO



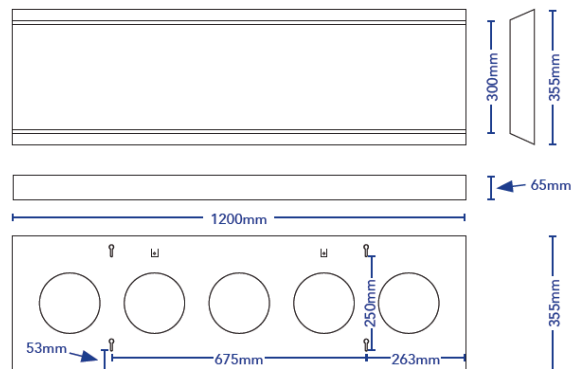
## PANEL LIGHT

DESCRIPTION	LED Panel Light
CODES	1811
FINISHES	White
COLOUR TEMP	3000K, 4000K, 5700K
BEAM ANGLE	100
CRI	≥80
LUMEN OUTPUT	3000Lm
WATTAGE	30W
FIXTURE VOLTAGE	240V AC
DIMMING	Non-Dim, DALI
DRIVER	Remote Driver Included
IP RATING	IP20
CUTOUT	1210mm x 310mm (Recessed frame only)

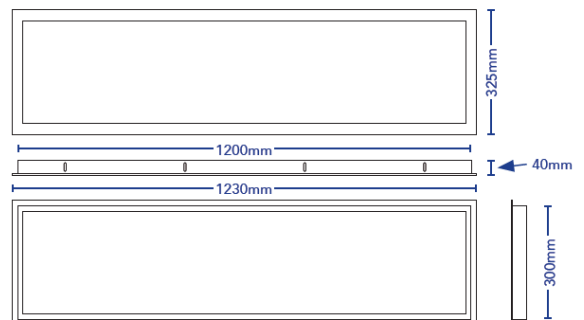
Notes:  
All data stipulated are nominal values based on 3000K with accuracy of +/- 5%.



Surface Mounted Frame



Recessed Frame



# PANEL LIGHT

---

## MANUFACTURING OPTIONS

---

### FIXTURE

CODE	FRAME	CCT	DIMMING
1811	SM - Surface Mount	30 - 3000K	ND - Non-Dim
	RE - Recessed	40 - 4000K	DA - DALI
		57 - 5700K	

Example Code: 1811\_SM\_30\_ND

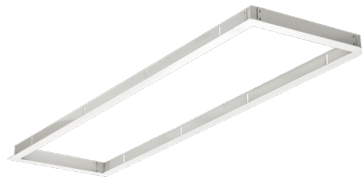
Notes:  
Panel can not be mounted without a frame.  
3000K provided as standard unless specified otherwise.

## MOUNTING FRAMES

---



SM - Surface Mount



RE - Recessed