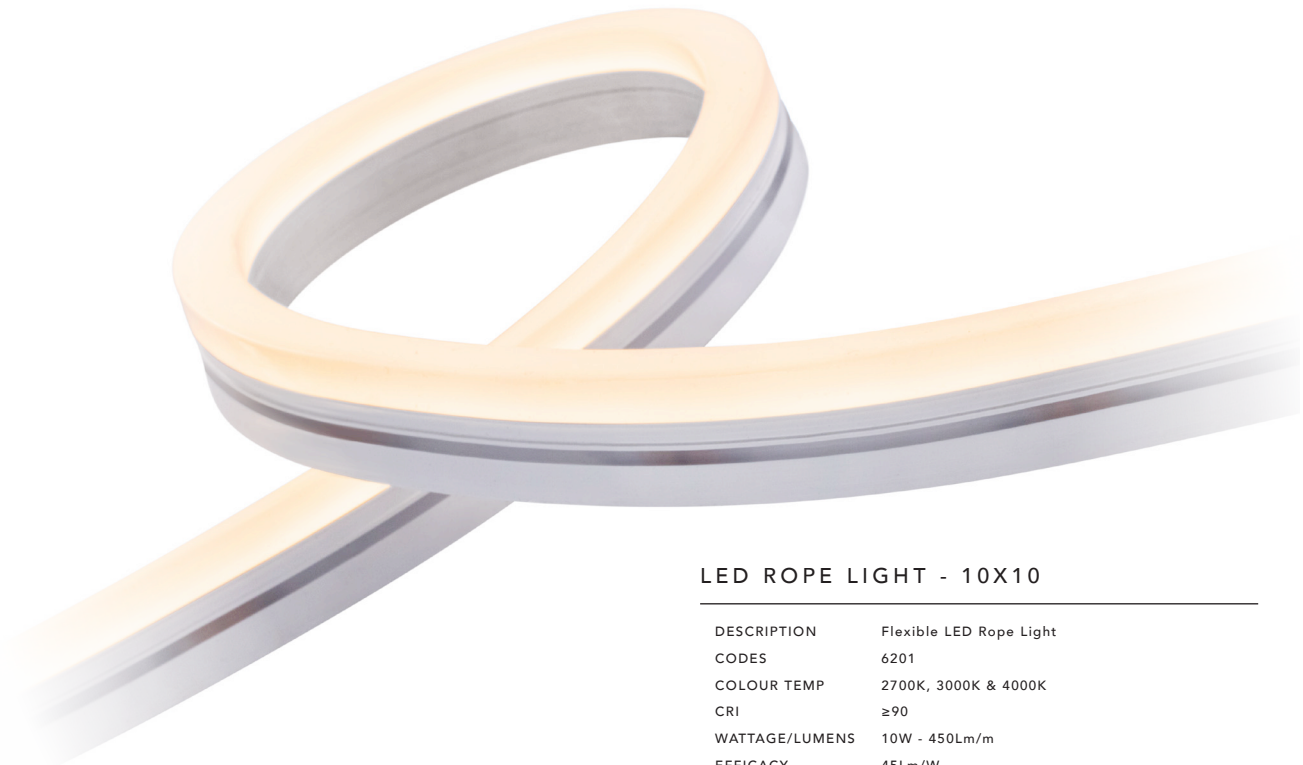
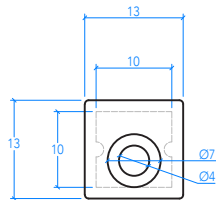


TOVO

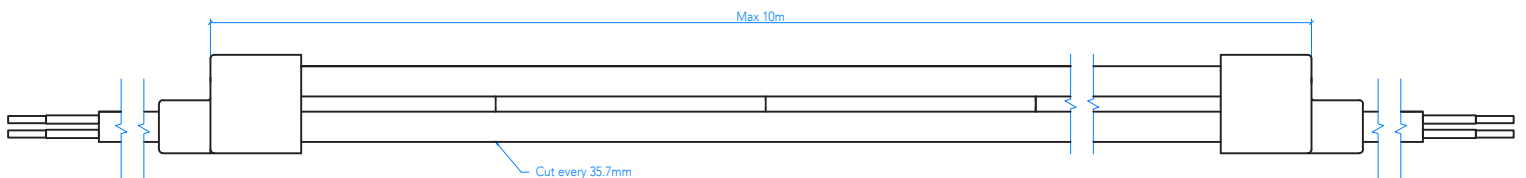
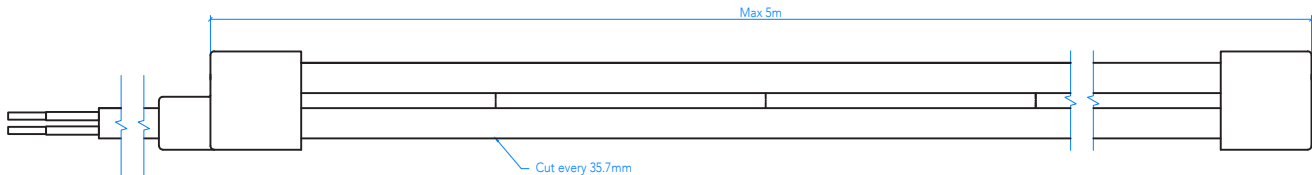


LED ROPE LIGHT - 10X10

DESCRIPTION	Flexible LED Rope Light
CODES	6201
COLOUR TEMP	2700K, 3000K & 4000K
CRI	≥90
WATTAGE/LUMENS	10W - 450Lm/m
EFFICACY	45Lm/W
FIXTURE VOLTAGE	24V DC Constant Voltage
DIMMING	Based On Driver Selection
DRIVER	Remote Driver Required
DRIVER OPTIONS	Non-Dim, Phase, Touch, DALI
IP RATING	IP67



Notes:
 All data stipulated are nominal values based on 2700K with accuracy of +/- 5%.
 Lengths longer than 5000mm require two power feeds, one at each end.
 Maximum length 10000mm.



ROPE LIGHT - 10X10

MANUFACTURING OPTIONS

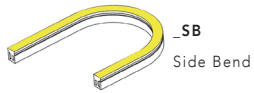
FIXTURE				DRIVER
CODE	BEND DIRECTION	CABLE ENTRY	CCT	DIMMING
6201_	SB - Side Bend	EC - End Cable	27 - 2700K	ND - Non-Dim
	TB - Top Bend	BC - Bottom Cable	30 - 3000K	PH - Phase Dim
		RC - Right Cable	40 - 4000K	TH - Touch Dim
		LC - Left Cable	DA - DALI	

Example Code: 6201_SB_EC_27_DA

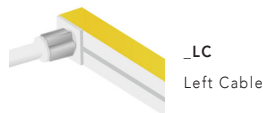
Notes:
Phase dimmable drivers are not recommended for 24V DC fixtures due to possible flickering, but can be provided upon request.

ACCESSORIES OPTIONS

BEND DIRECTIONS



CABLE ENTRY



MOUNTING ACCESSORIES

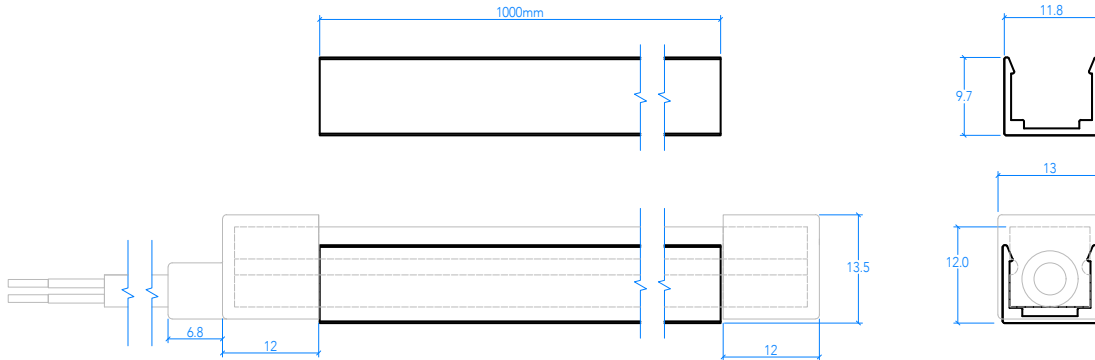


Notes:
End Cable Entry is the default if no specific cable entry is stipulated.
Mounting accessories should be ordered separately.

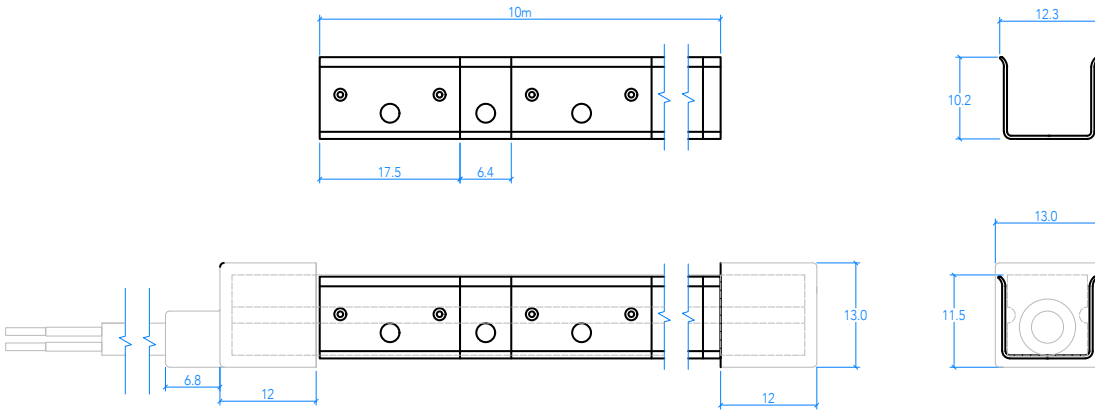
ROPE LIGHT - 10X10

DIMENSIONS

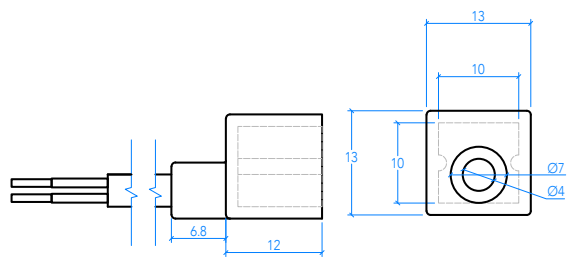
Rigid Mounting Extrusion



Flexible Mounting Extrusion



End Cable



Side Cable

